



PAK TURK

**OVER UNDER
Shotgun**

INSTRUCTIONMANUAL

READ THE INSTRUCTIONS AND WARNINGS
IN THIS MANUAL CAREFULLY BEFORE
USING THIS FIREARM

QUALITY CONTROL - WARRANTY CARD

Serial No. of weapon _____ Model _____

Manufacturer _____

Caliber _____ Year of manufacture _____ Barrel Length _____

Number of Cartridges and grams of cartridges tested _____

Chamber details _____

PURCHASER _____

Address _____

Purchase date _____

Signature _____

PLEASE SIGN AND RETURN THIS CARD TO VALIDATE WARRANTY



INTERNATIONAL ARMS & SECURITY

IMPORTANT !

Even the safest gun can potentially be dangerous to you and others when it is not properly handled. Before using this firearm, completely read and understand this owner's manual. Always treat an unloaded firearm as if it were loaded.

WARNING !

Never point the firearm at anything you are not willing to destroy. Always keep your finger away from the trigger until you are ready to fire and your sights are on the target. Always keep your firearm pointing in a safe direction until you are ready to fire. Be sure of your target and beyond.

WARNING !

IF THIS FIREARM IS CARELESSLY OR IMPROPERLY HANDLED, UNINTENTIONAL DISCHARGE COULD RESULT AND COULD CAUSE PERSONAL INJURY, DEATH OR DAMAGE TO PROPERTY. For your safety and the safety of others this owner's operating manual contains important instructions, warning and safety procedures that must be understood before using your Hunt Group firearm. It is imperative that you read the entire manual and if you do not understand any part of it or the operation of your Hunt Group firearm, you should seek professional firearms instruction. Never disassemble your firearm beyond what is shown in this manual.

NOTICE Hunt Group shall not be responsible for personal injury, death or damage to property resulting from either intentional or accidental discharge of this firearm, or from its function when used for purposes or subjected to treatment for which it was not designed. Hunt Group will not honor claims involving this firearm which result from careless or improper handling, unauthorized adjustment or parts replacement, corrosion, neglect, or the use of wrong caliber ammunition, other than original high quality commercially manufactured ammunition in good condition, or any combination thereof. Hunt Group will not honor claims involving this firearm for any reason or cause when the second or subsequent owner makes such claims. Before the firearm left the factory, it was tested, carefully inspected and packaged. Hunt Group cannot control product handling after it leaves the factory; therefore please examine this firearm carefully at the time of purchase to ensure that it is unloaded and undamaged.

SAFETY REVIEW

- *Do NOT alter or modify your firearm.
- *Remember to have it serviced regularly.
- *Always handle your firearm as if it were loaded.
- *Never point your firearm at anything you don't intend to shoot.
- *Always make sure your firearm is not loaded and the bolt catch is latched open and to the rear before laying it down or handling it to someone.
- *Never leave a loaded firearm unattended.
- *Always be sure bore, muzzle, chamber and action are clear of obstruction or water.
- *Always check that ammunition is clean and undamaged.
- *Never drink alcoholic beverages or take drugs before or during shooting.
- *Always wear eye and ear protection when shooting.
- *Always keep safety on 'SAFE' when the firearm is loaded and a round is chambered until ready to shoot.
- *Never indulge in 'horseplay' when holding your firearm. Use screw drivers that are designed for firearms and fit screw slots properly to avoid damaging screw heads and slots.
- *Always store the firearm and ammunition separately, locked and away from children's reach.
- *Always keep your hands away from the muzzle of the gun to avoid serious injury.

MODEL OVERVIEW

To remove or unload shot shells, our shotguns have extractors and ejectors.

- The extractor model elevates the head of a live (or spent) shell from the chamber so it can be removed manually.

-Ejectors eject the fired shell from the barrel. The ejectors are automatic selective ejectors which mean they eject only fired shot shells.

The single selective trigger works like the single trigger, except it has a button that allows you to select which barrel fires first. Hunt Group Over & Under shotguns come with single selective triggers. The selection is located on the safety. Push the safety (while in the safe position) to the right side to fire the top barrel first and to the left to fire the bottom barrel first.

ON FIRE



ON SAFE



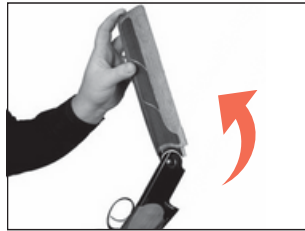
USING THE SAFETY

Safe Position : Push the manual safety button to the rearward (down) to engage the safety. The firearm is on safe when the 'S' is showing.

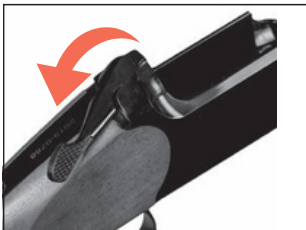
Fire Position : Push the manual safety button to the forward (up) to disengage the safety. The firearm is on fire when the 'S' is Not showing.



Remove all dirt and excess oil from the firearm, especially the breech area.



Remove the handguard by pushing the forend latch button. This allows the front of the handguard to release. With your other hand, separate the handguard from the stock.



Lightly oil the already cleaned contact points. Attach the barrel action by grasping the grip of the stock with your right arm. With your right thumb move the opening lever to the right.



Hold the barrels with the barrel's nose pointing down until the hinge notch engages with the hinge pins.



While keeping the hinge pin notch engaged with the hinge pin, lift the muzzle of the barrels until the action closes. When you release the hinge pin and notch the barrels will be locked in place.



Replace the handguard on the firearm by sliding the rear of the forearm into the barrel at the same angle by which you removed it. The round rear of the handguard should match the round front of the receiver. Lift the front of the handguard until it engages with the barrels with an audible “click”



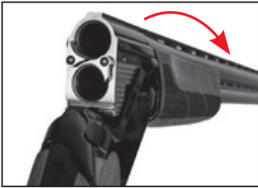
WARNING !

Always engage the manual safety (ON SAFE) until you are ready to fire. Mechanical safeties can fail, never rely on the mechanical safety alone. Always use safe gun handling practices.

WARNING

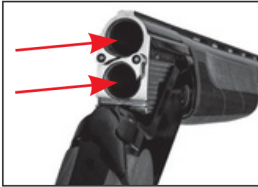
Before loading, be sure that the firearm safety is ON SAFE-by pushing the manual safety button rearward (down), and the chamber is empty. Always check for obstructions in the barrels before using, as they can increase barrel pressure and cause the barrel to explode when fired. This can result in serious injury or death of the shooter and/or others in the vicinity.

LOADING THE FIREARM



1. To load, break the action open.
2. Check the barrels for any obstruction, including dirt and excess oil.
3. Insert the desired shot shell into the chamber or chambers you plan to fire.

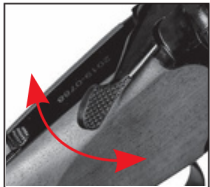
NOTICE Make sure the shells are of the correct gauge and chamber length for your firearm.



4. Close the action

NOTICE The firearm CANNOT be fired unless a shell is placed in the barrel.

5. The order in which the barrels are fired depends upon the selective trigger.



6. When ready to fire your firearm, be sure of your target, what is behind it, and the location of all person within your vicinity. Pick your target, release the safety by sliding it forward with your thumb and squeeze the trigger with your forefinger.

UNLOADING THE FIREARM: To unload, press the opening lever to the right and open the action. Fired shells will be ejected and unfired shells will be elevated above the chamber on models with automatic selective ejectors. Models with extractors will only elevate both fired and unfired shells above the chamber.

CLEARING MISFIRES In case of a misfire, wait at least 30 seconds while keeping the firearm pointed in a safe direction. Then, Carefully open the action away from yourself and others. If the primer on the rim is indented, the shell should be discarded in a manner that would prevent accidental injury to you and others. If there is no indentation on the primer or rim, your firearm has malfunctioned and should be serviced by a qualified gunsmith.

FIELD STRIPPING

The following instructions should be observed during disassembly and assembly

- *Always visually and physically check firearm to make sure it is unloaded and is in 'safe' condition.
- *Never keep live ammunition in the same room as firearm when handling or working on it.
- *The firearm should be disassembled on a table or bench.
- *The parts should be laid out in order of disassembly.
- *Force should not be used to remove or disassemble parts, as it may result in damage to the parts.
- *Only parts and accessories in good condition and designed for this model firearm should be used.
- *Only use proper tools designed for firearms when cleaning. Always use screw drivers that are designed for firearms and fit screw slots property to avoid damaging screw heads and slots.

STEPS TO FIELD STRIP YOUR FIREARM:



1- Make sure the firearm is unloaded and no shells are in the chamber.



2- Close the action. Place the firearm butt on your thigh and remove the forearm by pressing the forend latch button. With your other hand, separate the forearm from the barrels.



3- Separate the barrels from the receiver by holding the stock of the firearm in your right hand and the barrels in your left. Push the opening lever to the right with your thumb. Allow the front of the barrels to drop and lift the barrels upward out of the receiver.



4- Close the top lever by pressing on the button located in the action.

The firearm is now completely stripped. All the parts that require routine maintenance and cleaning are disassembled. The forearm should be reattached to the barrels for storage.

NOTICE No further disassembly is needed, unless it is done by person(s) qualified in shotgun repair. Improper functioning and damage to the firearm may result otherwise and void your warranty.

FIREARM REASSEMBLY: For correct assembly after cleaning and maintenance operations proceed as follows.

- 1-Lightly oil the already cleaned contact points. Attach the barrel action by grasping the grip of the stock with your right hand and placing the stock under your right arm. With your right thumb move the opening lever to the right.
- 2-Hold the barrels with the muzzle and pointing down until the hinge notch engages with the hinge pins.
- 3-While keeping the hinge pin notch engaged with the hinge pin, lift the muzzle and of the barrels until the action closes. When you release the hinge pin, the barrels will be locked in place.
- 4-Replace the forearm on the firearm by sliding the rear of the forearm into the barrel at the same angle by which you removed it. The round rear of the forearm should match the round front of the receiver. Lift the nose of the forearm until it engages with the barrels with an audible “click”.



CHOKE TUBE - CLEANING AND MAINTENANCE The barrels with internal chokes are equipped with various types of choke lubes. Before storing your firearm for long periods of time, it is recommended to clean the internal choke and relative barrel thread.

The coke controls how open or light the pattern of the shell will be. The chart below lists the chokes available (from open to light), and the core spending marks that indicate the specific choke.

	SKEET	IC	M	IM	F
CHOKE TUBE					
BBLs	CL	HHHH	HHH	HH	H

To change or clean the internal choke, proceed as follows:

- 1- Insert the tube into the end of the barrel and tighten with your fingers.
- 2- If the threaded seat of the choke on the barrel is too dirty, clean it.
- 3- Reassemble on the barrel seat, the king of choke required, taking care to insert the non-threaded part inside the barrel, before screwing the choke on the barrel's thread.
- 4- Finish the assembly of the choke by screwing it firmly using the choke wrench until the tube is snug.

NOTICE Never fire your firearm without choke tubes snugly tightened in barrels. DO NOT over tighten or forcefully tighten with the wrench.

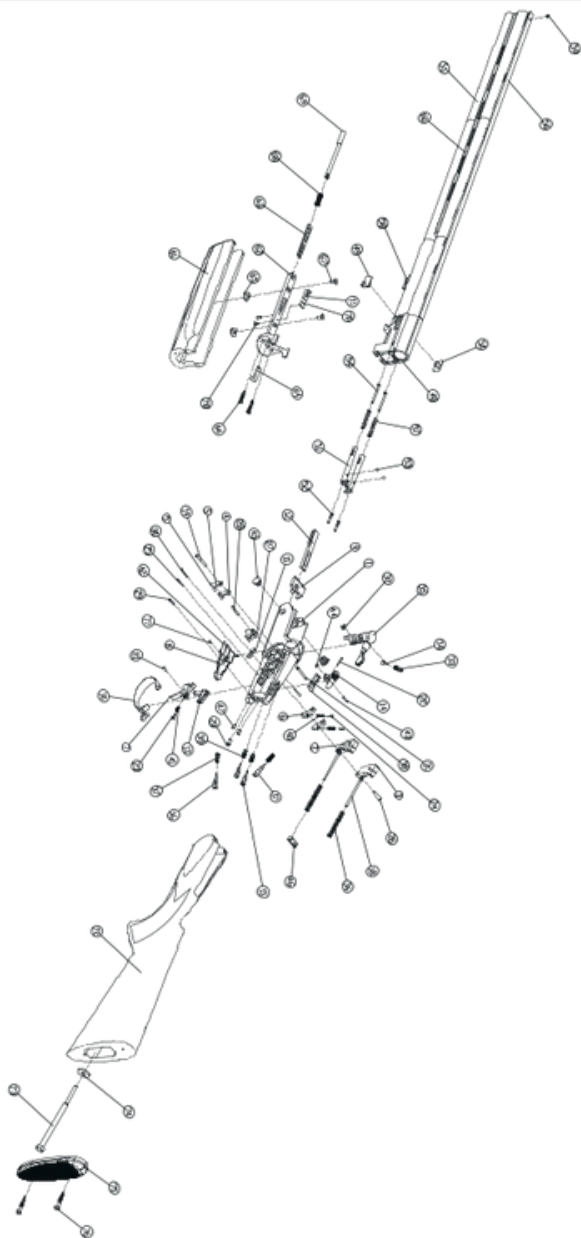
NOTICE If your firearm is equipped with choke tubes, do not use a brass brush to clean the barrels without having a choke tube installed. Barrels that utilize choke tubes must also have the choke tubes REMOVED to clean and oil the threads inside the barrel and the choke tubes themselves. This will protect the threads and prevent dirt build up that can cause tubes to become difficult to remove.

CLEANING, PROPER CARE AND MAINTENANCE

Regular cleaning and care will ensure longevity and enjoyment of your firearm. To keep the firearm in good working order, it is recommended to oil the parts subject to atmospheric corrosion. Firearm should be lubricated before shooting and periodically during long shooting sessions. No special maintenance is required. However, the following maintenance is recommended: normal cleaning of the barrel after use; periodical cleaning or lubrication of the firing mechanism, consisting of hammer, trigger, etc.

Cleaning and Lubrication

- 1- Make sure the breech block and receiver are clean and lightly oiled with high quality gun oil. DO NOT USE silicone, lanolin, or WD-40
- 2- Run an oil patch through the bore with a cleaning rod starting from the breech end. To prevent leading, use a cleaning solvent and brass brush to clean the bore periodically. Follow this cleaning with one ore the clean oil patches.
- 3- Wipe down additional parts with bore cleaner or CLP until loose carbon and dirt is removed.
- 4- Wipe parts clean with soft dry cloth and apply lubrication.
- 5- Care for your wood stock and forearm the same way you would a piece of furnite with the same finish.



1 Receiver	27 Locking Opening Part	53 Ejector Ball
2 Hammer (Left)	28 Locking Opening Pin	54 Ejector Spring Pin
3 Hammer (Right)	29 Trigger Guard Pin	55 Barrel
4 Cocking Lever (Right)	30 Receiver Bottom Plate	56 Top Rib
5 Cocking Lever (Left)	31 Firing Pin Connecting Pin	57 Ejector Spring
6 Inner Trigger	32 Top Lever Connecting Pin	58 Forearm Latch
7 Trigger	33 Top Lever Detent Pin Spring	59 Front Sight
8 Receiver Bottom Plate	34 Top Lever Detent Pin	60 Mid-Rib
9 Blocker Plate	35 Top Lever	61 Handguard
10 Trigger Guard	36 Hammer Spring	62 Forearm Iron
11 Locking Connecting Part	37 Top Firing Pin Spring	63 Fore-end Latch
12 Cocking Rod	38 Safety Spring	64 Forearm Bolt
13 Inertia Block	39 Ejector Spring (Right-Left)	65 Fore-end Latch Button Part
14 Safety Selector	40 Inner Trigger Spring	66 Forearm Latch Frame Screw
15 Ejector Pin	41 Inertia Spring	67 Fore-end Screw
16 Top Firing Pin	42 Top Lever Locking Spring	68 Fore-end Latch Button Spring
17 Bottom Firing Pin	43 Safety Pin	69 Fore-end Latch Button
18 Hammer Spring Guide Rod	44 Safety Washer	70 Fore-end Latch Part 2
19 Cocking Lever Pin	45 Hinge Pin	71 Fore-end Latch Part 1
20 Hammer Spring Pin	46 Hammer Spring Catch	72 Stock
21 Inertia Block Pin	47 Hammer Spring Nut	73 Stock Bolt
22 Safety Pin	48 Breech	74 Stock Bolt Washer
23 Inertia Block Spring Pin	49 Left Fore-end Lever	75 Butt Plate
24 Inner Trigger Pin	50 Right Fore-end Lever	76 Butt Plate Screw
25 Trigger Pin	51 Ejector	77 Blocker Plate Locking Pin
26 Hammer Pin	52 Ejector Pin	78 Fore-end Latch Screw



PAK TURK



BE COURTEOUS

When shooting or hunting always acquire the permission of the landowner. Respect the land. Do not litter, use gates when possible, leave open and closed gates closed. Drive vehicles only where advance permission has been granted and always express gratitude for use of another person's land.

Offer your labour or game as repayment for the privilege of use. Remember you are helping develop a reputation for all sportsmen/sportswomen.

Mail Us

defence@pakturkarms.com

Address

Hamidiye Mahallesi, 40907.Sokak, No:1-A, Beysehir, konya